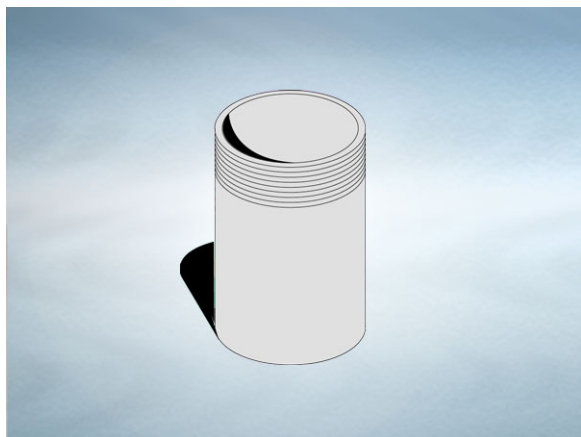


Product Details

T301 Adaptor

Technical Data

**Dimensions:**

83 dia. overall size

140 - Length

Connection - 82mm Plastic, 75mm DIN19522 / Harmer SML

Materials - ABS

Weight - 0.2 kg

General Description:

ABS T series Threaded Pipework Adaptor, with 3" BSP inlet and 82.5 dia. outlet. Spigot adaptor, enables gullies with BSP threaded outlet to be connected to pipework. Longer spigots can be made in 10mm increments up to 900mm. To specify/order add suffix "-" and length (mm).

Materials:

ABS: Used for bodies, dip tubes, extensions and spigot adaptors. A cost effective, fire resistant material.

All dimensions are in millimetres unless stated. In line with general practice all dimensions shown are nominal.

Wade International

Third Avenue, Halstead, Essex, CO9 2SX.

Telephone: +44 (0)1787 475151

Fax: +44 (0)1787 475579

e-mail: wadetech@alumascwms.co.uk

website: <https://www.alumascwms.co.uk/brands/wade/>

Dimensioned Section for T301:

